

Strategic Roads and Bridges Program

June 2021

Planning is underway to replace two strategic bridges between Mt Beauty and Mitta Mitta as part of the Victorian Government's committed \$272.3million to Reduce Bushfire Risk in Victoria

How does the community benefit by the Reducing Bushfire Risk (RBR) program?

This program will further reduce risk on public land by supporting early detection and rapid suppression of fires through upgrading fire towers, building new bridges and improving roads

Reducing bushfire risk will better protect people, homes, towns, emergency facilities and other priority assets, minimise the economic impact of bushfires and improve community and ecosystem health.

Better roads will increase firefighter and public safety by improving access and evacuation during bushfires and providing a safer platform from which firefighters can prepare for and fight bushfires.

An improved and more reliable road network will provide better conditions for recreation and tourism activities in regional Victoria.

How can I get involved in the discussion

For information about road and track closures visit: www.ffm.vic.gov.au/visiting-state-forests/forest-and-road-closures and www.parks.vic.gov.au/get-into-nature/safety-in-nature/seasonal-road-closures

For more information on the Reducing Bushfire Risk program, contact DELWP customer call centre on 136186 or email customer.service@delwp.vic.gov.au

What does the RBR program involve here?

Two bridges, which provide critical firefighter access to some of north east Victoria's most bushfire prone areas, are being replaced.

Mountain Creek Bridge which is located along Mountain Creek Road will be replaced.

Lords Creek Bridge, which is located along Trappers Gap Road will be replaced.

Why is the RBR program taking place?

The new bridges will have increased load limits which will provide access for heavy firefighting vehicles including fire tankers, bulldozers and excavators responding to bushfires.

"The works will also improve access to some of the region's most popular recreation and tourist destinations, by providing safer and better access for visitors.

"By providing safer and quicker access for firefighters and heavy machinery, we greatly improve the chance of controlling bushfires before they spread and impact communities and the environment.

When will the bridge works commence and the roads be closed to traffic take place?

Works are scheduled to commence in September.

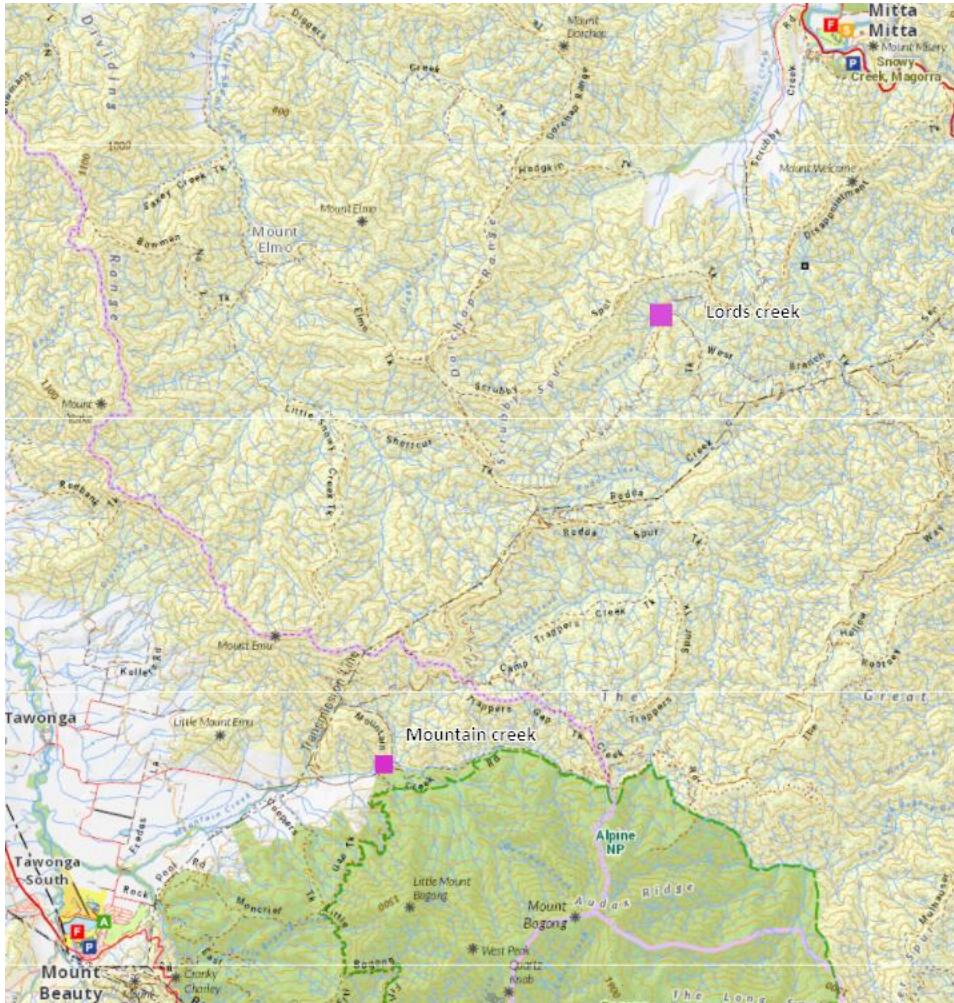
Mountain Creek Road and Trappers Gap Road will be closed while construction is underway.

Signage will be in place to advise users of the forest.

Roads will be closed for the minimum time possible.


FFMVic will ensure the safety of forest users and visitors and minimise the closures as much as possible.

For further information on these works please call the Ovens office on (03) 5731 1222 or if no answer the DELWP Customer Service Centre on 136 186 or email ben.merritt@delwp.vic.gov.au



Location of the two bridges that will be replaced are shown as purple squares.
NB the road closure locations on Mountain Creek and Trappers Gap roads will be marked onsite and are not shown on this map.

This line of text is essential for formatting. Keep all content above this instruction text line. This text will not appear on your document.

© The State of Victoria Department of Environment, Land, Water and Planning 2021
 This work is licensed under a Creative Commons Attribution 4.0 International licence. You are free to re-use the work under that licence, on the condition that you credit the State of Victoria as author. The licence does not apply to any images, photographs or branding, including the Victorian Coat of Arms, the Victorian Government logo and the Department of Environment, Land, Water and Planning (DELWP) logo. To view a copy of this licence, visit <http://creativecommons.org/licenses/by/4.0/>

Disclaimer
This publication may be of assistance to you but the State of Victoria and its employees do not guarantee that the publication is without flaw of any kind or is wholly appropriate for your particular purposes and therefore disclaims all liability for any error, loss or other consequence which may arise from you relying on any information in this publication.

Environment,
Land, Water
and Planning

Accessibility

If you would like to receive this publication in an alternative format, please telephone the DELWP Customer Service Centre on 136 186, email customer.service@delwp.vic.gov.au, or via the National Relay Service on 133 677 www.relayservice.com.au. This document is also available on the internet at www.delwp.vic.gov.au

