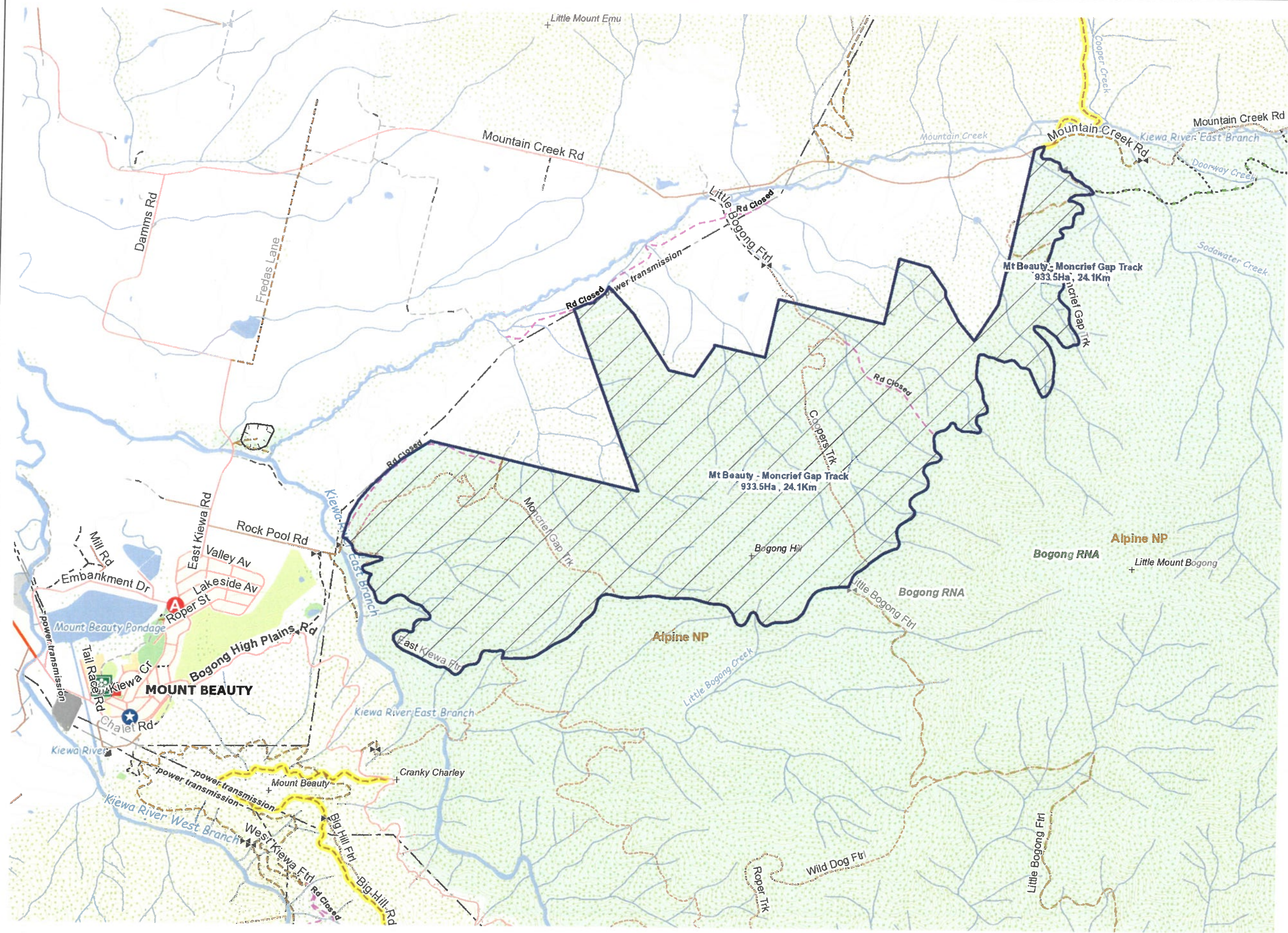


# Mt Beauty - Moncrief Gap Track



- ### Legend
- Fuel Treatment Locations - Within 10 days
  - Scheduled
  - Ready (Within 10 days)
  - Fuel Treatment Locations - Next 24 hours
  - Authorisation Required (Next 24 hours)
  - Ignition Authorised (Next 24 hours)
  - Fuel Treatment Locations - In Progress
  - Ignition (In progress)
  - Commenced
  - Fuel Treatment Locations - Patrol
  - Under Control - 1 (Patrol)
  - Under Control - 2 (Patrol)
  - Fuel Treatment Areas - Planned Burns
  - Treated Area Burnt
  - Treated Area Mechanical Works
  - Neighbourhood Safer Places (10K-250K)
  - Emergency Services (10K-100K)
  - Ambulance Station
  - Fire Station
  - Fire Station (Forest Industry)
  - Police Station
  - SES Unit
  - + Gates on roads
  - + Towns (<50K)
  - + Topographic Features
  - + Excavation Sites
  - Roads-closed (<50K)
  - Roads (10K-50K)
  - Freeway
  - Highway Sealed
  - Highway Unsealed
  - Arterial Road Sealed
  - Arterial Road Unsealed
  - Sealed Road
  - Unsealed Road
  - Private Access
  - 2wd
  - 4wd
  - Bicycle / Walking Track
  - Proposed Road
  - Strategic Fire Access
  - Heavy
  - Medium
  - Unknown
  - + Roads (less than 50K)
  - + Railway (<100K)
  - Transmission Lines
  - Public Land Management Overlays
  - Border (<100K)
  - Contours (25K-50K)
  - Waterbody (<50K)
  - Waterbody

Disclaimer: This map is a snapshot generated from Victorian Government data. This material may be of assistance to you but the State of Victoria does not guarantee that the publication is without flaw of any kind or is wholly appropriate for your particular purposes and therefore disclaims all liability for error, loss or damage which may arise from reliance upon it. All persons accessing this information should make appropriate enquiries to assess the currency of the data.

Produced on: July 8, 2020 11:34:27 AM

